



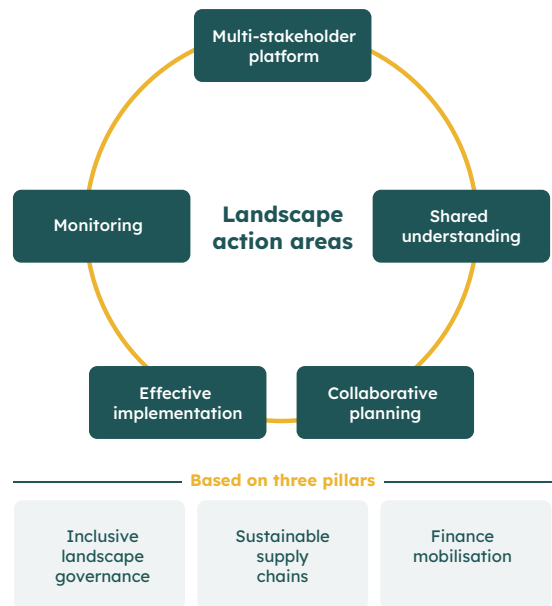
# Financing sustainable landscapes for people and nature

## What is the Landscape Approach?

Sustainable landscapes are needed to support inclusive livelihoods, protect and restore biodiversity, and tackle climate change.

The landscape approach is an integrated territorial management framework that seeks to integrate sustainable production, conservation, and inclusive social development across a whole land use mosaic, to sustain biodiversity and ecosystem services, whilst ensuring room for subsistence and commercial activities. It coordinates individual efforts and actors, supports development activities, and mobilises financing and political commitments.

Development of a sustainable landscape approach requires five linked action areas shown on the right, supported by three pillars.

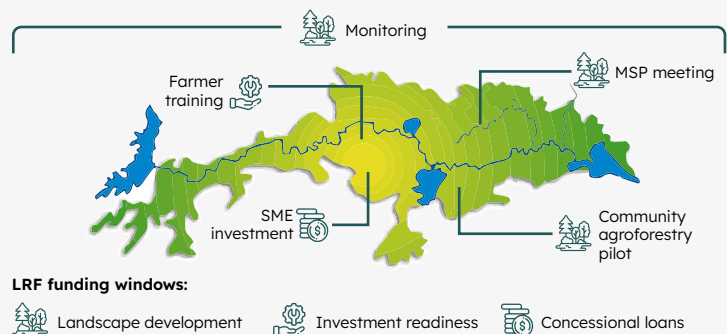


## Landscape Resilience Fund support for landscapes

The LRF has a dedicated funding window for sustainable landscape development, alongside windows for SME investments and technical assistance, and funds a range of landscape-level activities in its landscapes, including:

- **Multi-stakeholder platforms**, to support inclusive and effective landscape governance and collaboration
- **Landscape analysis and monitoring**, to understand climate trends and impacts, and inform LRF interventions
- **Training for farmers and SMEs**, on resilient agriculture and sustainable business practices
- **Identification of investment opportunities** for the LRF, and local pre- and post-investment process support

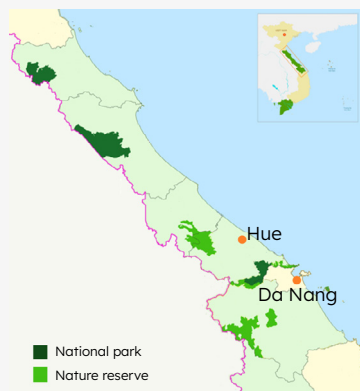
**LRF's integrated approach:** landscape work creates an enabling environment through improved landscape governance and management, with support for more sustainable and resilient supply chains. SME investments, in turn, improve livelihoods and encourage a transition to climate-smart agriculture practices within the landscape.



## Selected LRF landscapes

### Central Annamites

Vietnam



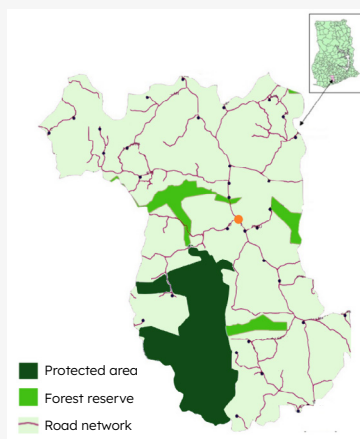
The Central Annamites is an important tropical forest landscape, part of one of the largest continuous natural forests in Asia. In addition to its outstanding biological value and cultural richness, the landscape is also one of Vietnam's key economic regions with a workforce of over 6 million people from 40 ethnic groups, who are mostly dependent on agriculture and forestry. Climate impacts are increasing in severity, particularly storms, floods, and landslides.

#### Selected LRF activities

- Organising a multi-stakeholder platform, bringing together government, private sector, and civil society to promote inclusive development and sustainable business models for coffee, timber and non-timber products
- Training for 23 SMEs focused on developing green business plans and accessing funding. Technical assistance on product development and market access for 7 SMEs
- Identification and screening of 160+ agriculture/forestry enterprises

### Kakum Landscape

Ghana



The Kakum landscape is an official Hotspot Intervention Area under the government's emission reduction programme, which aims to safeguard Ghana's forests, and improve cocoa farmers' yields and livelihoods. Over 80% of households are involved in agriculture, mainly small-scale cocoa farming, food crop farming, and oil palm production. Agriculture is being negatively impacted by climate change, with communities in the landscape experiencing long droughts, irregular rainfall, and increasing temperatures.

#### Selected LRF activities

- Co-organising landscape multi-stakeholder platform with local cocoa sector actors
- Development of landscape monitoring framework and baselines
- Ongoing local support for the LRF's first investment, Koa Impact, a Swiss-Ghanaian company working closely with farmers to create a new source of income from cocoa pulp

### Contact the LRF

If you are interested in supporting the development of sustainable landscapes for people and nature, please contact us at [contact@landscaperesiliencefund.org](mailto:contact@landscaperesiliencefund.org).



In partnership with

WWF partners  
with the LRF for  
climate resilience  
and biodiversity

